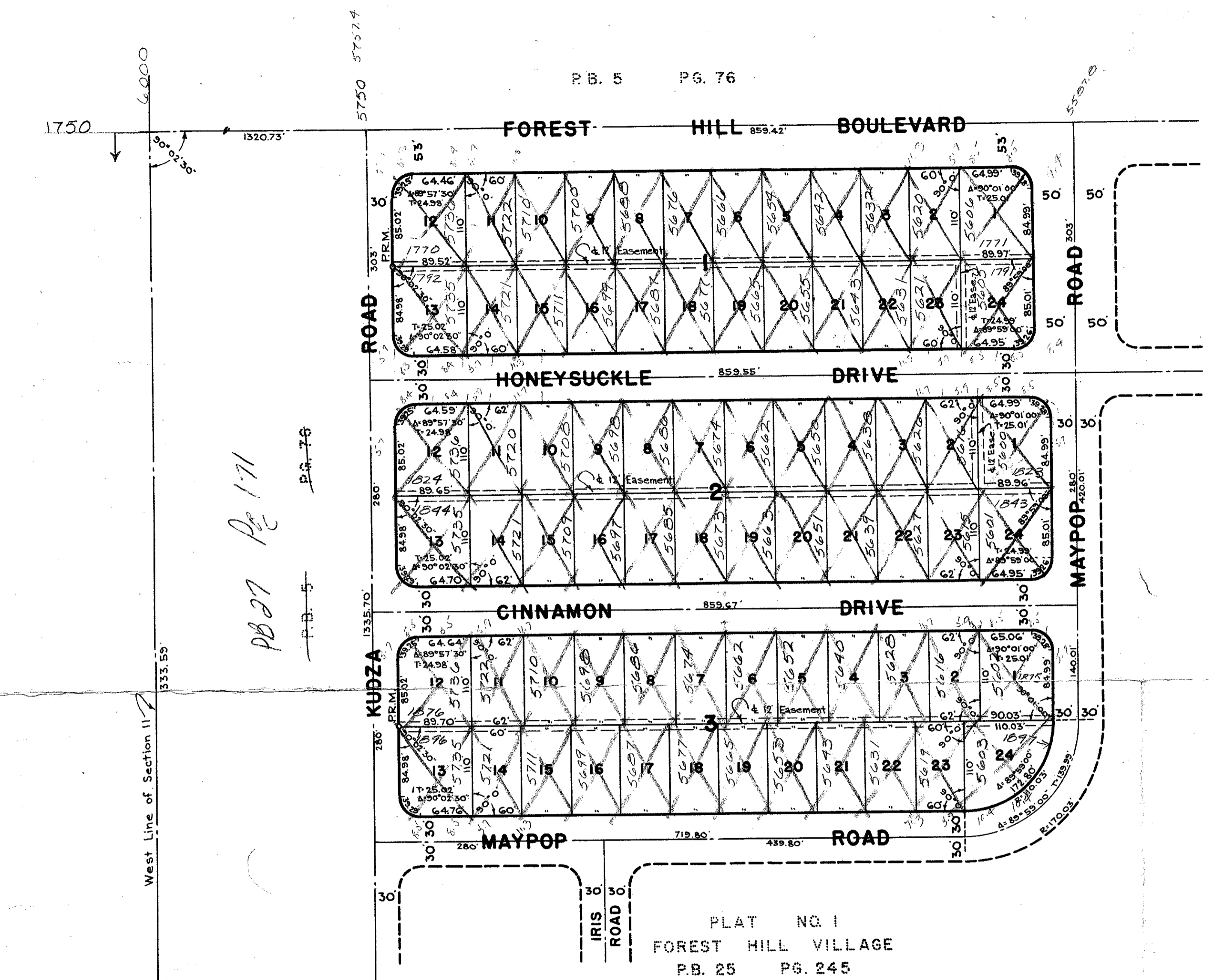


REPLAT OF BLOCKS 1, 2 & 3 OF PLAT NO. 1 FOREST HILL VILLAGE

IN SECTION II, TWP. 44 S., RGE. 42 E.
PALM BEACH COUNTY, FLORIDA

DRAWING NUMBER
26-56

STATE OF FLORIDA
COUNTY OF PALM BEACH } ss.
This Plat was filed for record at _____
this _____ day of _____
195____, and duly recorded in Plat Book No. _____
on page _____
J. ALBERT STETTE, Clerk Circuit Court
By 26/56



NOTE
Building Setback Lines shall be as required by Palm Beach County Zoning Regulations.
There shall be no buildings or other structures placed on Utility Easements.

NOTE
All Block Corners are rounded with a 25 ft. radius curve, unless otherwise shown.
Easements are for Public Utilities, unless otherwise noted.

STATE OF FLORIDA
COUNTY OF PALM BEACH } ss.
KNOW ALL MEN BY THESE PRESENTS, that FOREST HILL VILLAGE, INC., a Florida Corporation, the owners of the tract of land lying and being in Section II, Township 44 South, Range 42 East, Palm Beach County, Florida, shown hereon as REPLAT OF BLOCKS 1, 2 & 3, OF PLAT NO. 1, FOREST HILL VILLAGE and more particularly described as follows, to wit:
Being a Replat of Blocks 1, 2 and 3, Plat No. 1, Forest Hill Village, recorded in Plat Book 25, Page 245, Public Records of Palm Beach County, Florida.
has caused the same to be surveyed and platted as shown hereon, and does hereby dedicate to the perpetual use of the public, the use of the Easements for the construction and maintenance of Public Utilities.
IN WITNESS WHEREOF, the said Corporation has caused these presents to be signed by its President and attested by its Secretary and its corporate seal to be affixed hereto, by and with the authority of its Board of Directors, this _____ day of _____, A.D. 1959.

FOREST HILL VILLAGE, INC.

Attest: _____ By: _____
Secretary President

STATE OF FLORIDA
COUNTY OF PALM BEACH } ss.
I HEREBY CERTIFY that on this day personally appeared before me, an officer duly authorized to administer oaths and take acknowledgments, E. J. ROSSODIVITA and STEPHEN ABRAMSON, President and Secretary, respectively, of FOREST HILL VILLAGE, INC., a Florida Corporation, to me well known and known to me to be the individuals described in, and who executed the foregoing dedication, and they acknowledged before me that they executed the same as such officers of said Corporation, by and with the authority of its Board of Directors for the purposes therein expressed, and that their act and deed was the act and deed of said Corporation.
WITNESS my hand and official seal at West Palm Beach, County of Palm Beach and State of Florida, this _____ day of _____, A.D. 1959.

Notary Public

My Commission expires: August 7, 1961

STATE OF FLORIDA
COUNTY OF PALM BEACH } ss.
I HEREBY CERTIFY that the plat shown hereon is a true and correct representation of a survey, made under my direction, of the above described property, and that said survey is accurate to the best of my knowledge and belief, and that permanent reference monuments (P.R.M.) have been placed as required by law.

Registered Land Surveyor
Florida Certificate No. 831 26/56
Subscribed and sworn to before me this _____ day of _____, A.D. 1959

My Commission expires: August 7, 1961

ADVANCE COPY
For Information Only

Approved: _____, A.D. 1959
Board of County Commissioners
By: _____ Chairman
By: _____ County Engineer

PRINTED
MAY 4

BROCKWAY, WEBER & BROCKWAY
ENGINEERS, INCORPORATED
WEST PALM BEACH, FLORIDA

**REPLAT OF BLOCKS 1, 2 & 3 OF PLAT NO. 1
FOREST HILL VILLAGE**
(26-56)

FIELD: _____ SCALE: " = 100' Dwg. No. _____
OFFICE: J.J.F. DATE: MAY 1959
DR. BY: M.G.